



THE BORE PLACE RIDES



Bore Place is home to the Commonwork Trust, a non-profit organisation with a commitment to promoting sustainability, outdoor learning and supporting young people. We are pleased to share our 500-acre organic estate with cyclists and other visitors.

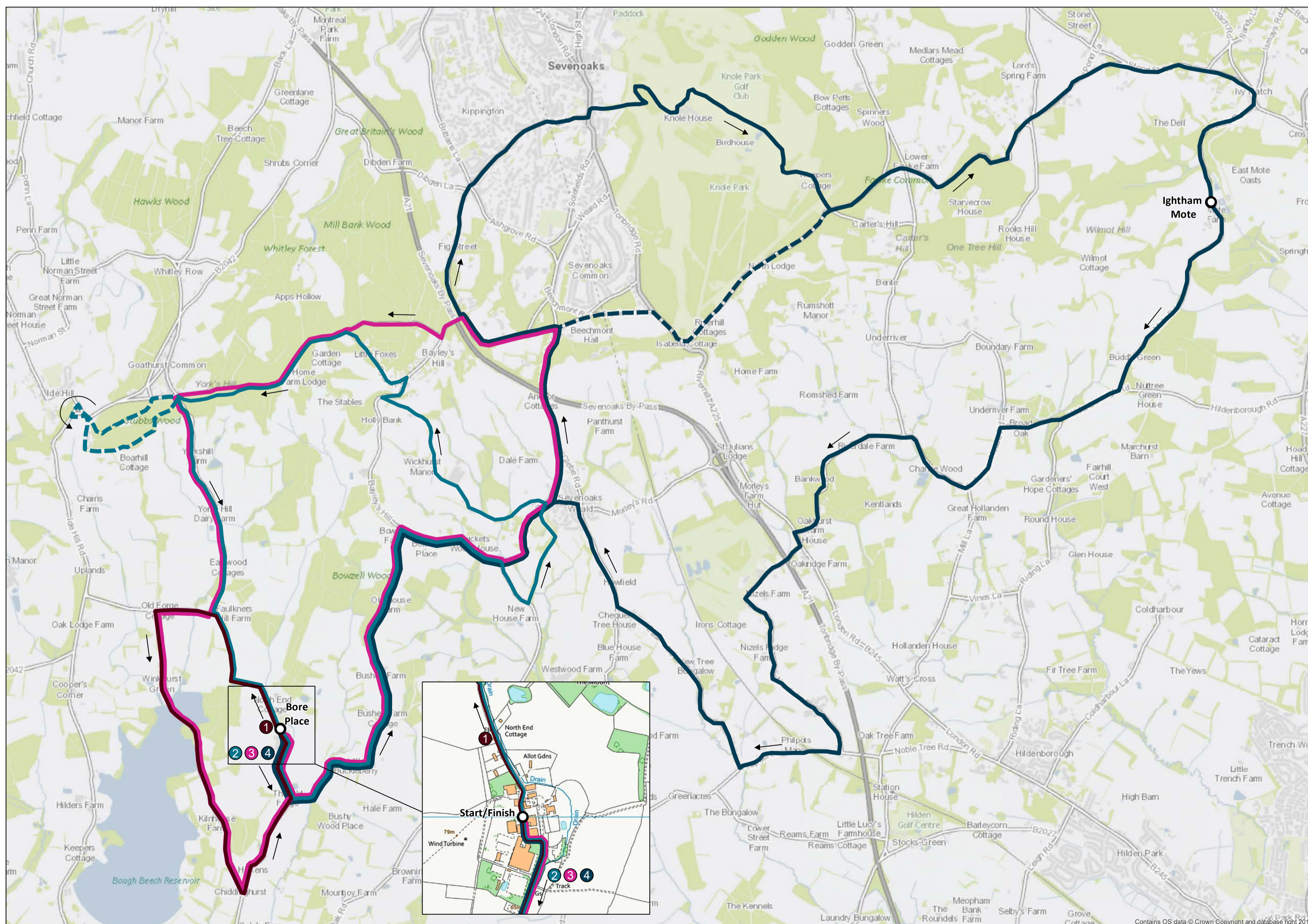
SAFETY TIPS FOR CYCLISTS:

- Obey traffic lights and signs
- Listen out for vehicles on country roads
- Wear a helmet
- Keep your bike in good condition
- Be aware of slippery surfaces when wet
- Be aware of pedestrians who might be walking on the road
- Most of all have fun!

These four cycle routes are all on the highway or public rights of way - you are responsible for your own safety at all times when cycling these routes.

ROUTE NAVIGATION

You can download a PDF map or GPX files of the routes at www.boreplace.org/cycle



BOUGH BEECH RESERVOIR

MOSTLY OFF ROAD
4.41 miles
(7.1 km)

ROUTE 1

Grade: Easy due to short distance and very little ascent

Time: Approx 45 minutes, but allow 1hr 30 min to fully appreciate the route

Take a relaxing ride through the countryside to Bough Beech reservoir. There's plenty of opportunity for wildlife spotting and to enjoy the peaceful landscape.



SEVENOAKS WEALD AND YORKS HILL LOOP

PART OFF ROAD
2.5 miles
(2.2 km)
8.7 miles
(4 km)

ROUTE 2

Grade: Moderate due to relatively short distance with significant ascent

Time: Allow up to 3 hours

This route is best suited for more experienced cyclists as it includes a steep off-road section of hillside which then provides a marvellous descent back to Bore Place at the end of your ride.



SEVENOAKS WEALD AND YORKS HILL LOOP

ALL ROAD
10.4 miles
(16.8 km)

ROUTE 3

Grade: Moderate due to relatively short distance with quite significant total ascent

Time: Allow up to 3 hours

Cycle through the Sevenoaks Weald followed by a steep climb to the top of Bayley's Hill. Take in the glorious views before descending steeply, then gliding past Bough Beech Reservoir and returning back to Bore Place.



KNOLE AND IGHTHAM MOTE LOOP

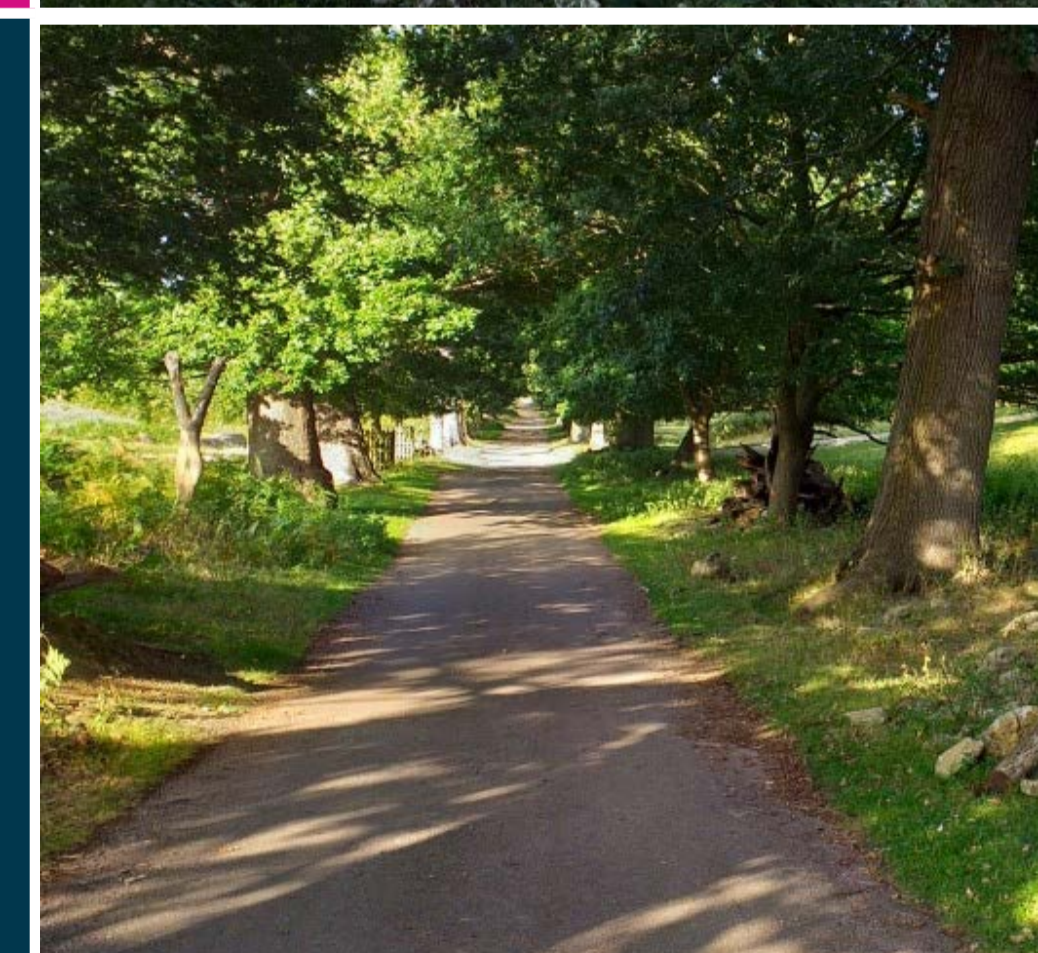
ALL ROAD
22.7 miles
(36.3 km)

ROUTE 4

Grade: Moderate + includes a little over 200 m of total ascent over the first 20 km

Time: At least 4 hours

This scenic loop offers an enjoyable and more challenging route option through Knole Park. Picturesque country lanes through Ightham, followed by impressive views of Ightham Mote Tudor mansion as you descend into the Sevenoaks Weald.



Bore Place Road, Chiddingstone, Kent, TN8 7AR

01732 463255 www.boreplace.org

Home of the Commonwork Trust (reg. charity 1160725 & company 09254227) & Commonwork Organic Farms Ltd (reg. company 1977080)



The European Agricultural Fund for Rural Development:

Europe investing in rural areas